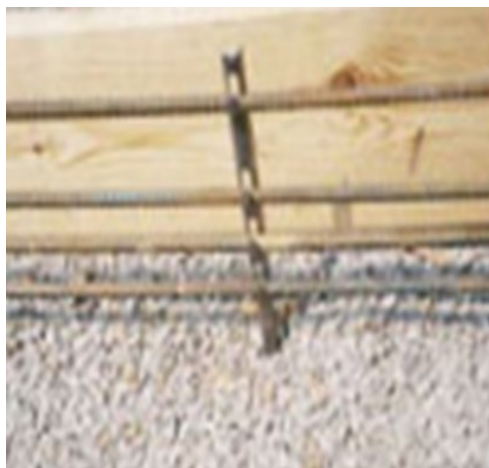


Plastic or Steel Stake:

- 18 inches long, used as a grade stake
- Max bar size #5
- 4 different locations for placement of rebar—9", 11", 13", 16.5"
- Recommended spacing 5 feet
- Used in footings and other concrete applications



P18-4



S18-4

Item #	Length	Max Bar	Qty. Box	Boxes/Pallet
P-18-4	18"	#5	100	50
S-18-4	18"	#5	50	100