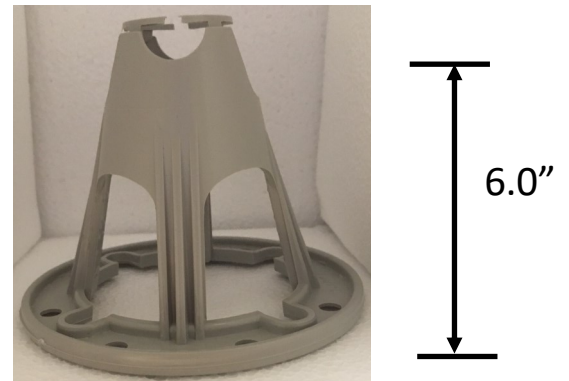
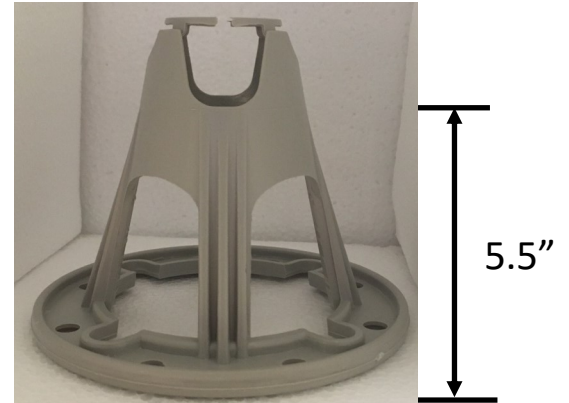
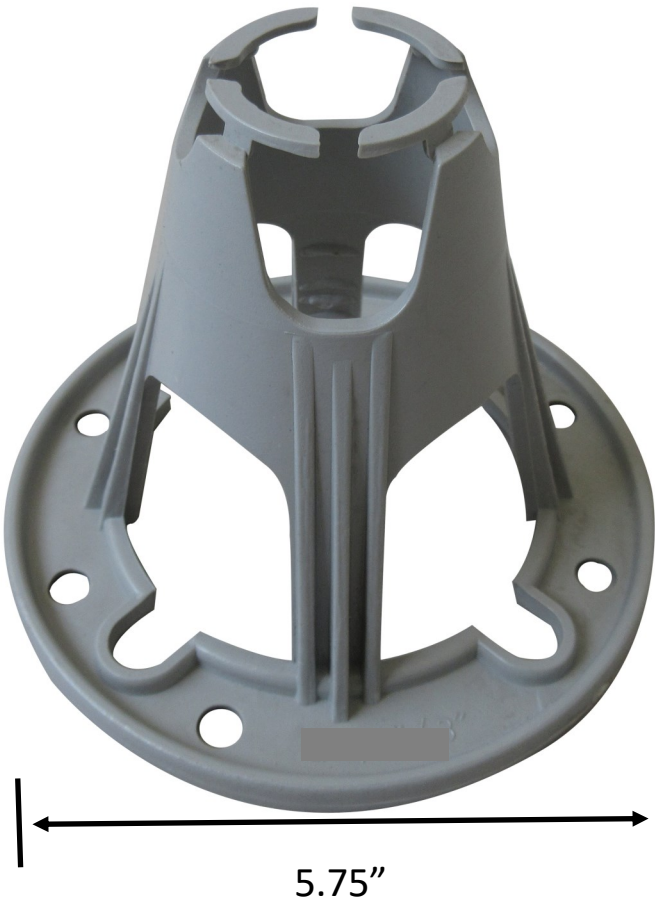


ReBAR™

SUPPORT PRODUCTS



PCGCB600

5-1/2" / 6" Grade Chair With Base

- Primary use is for slab on grade use.
- Manufactured from Polymeric Carbon ABS Plastic
- Works well with up to #8 rebar
- Internal testing: minimum failure 947 pound, maximum failure 1,280 pounds
- Meets or exceeds requirements of CRSI Class 1 Bar Support
- Plastic tangs on the top help secure if used with wire-mesh, break away when used with rebar.